

STANDARD ARRIVAL  
CHART - INSTRUMENT  
(STAR) - ICAO

TRANSITION ALT  
10000 FT

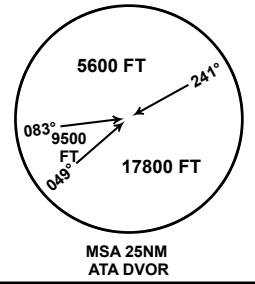
ALMATY APPROACH 118.3  
ALMATY RADAR 126.8  
ALMATY TOWER 119.4  
ALMATY ATIS (EN) 129.8  
ALMATY ATIS (RU) 135.1

(RNAV 1 STAR BASED ON GNSS)  
ALUGI 1Z, DESOK 1Z, DOTAL 1Z, GOGDO 1Z

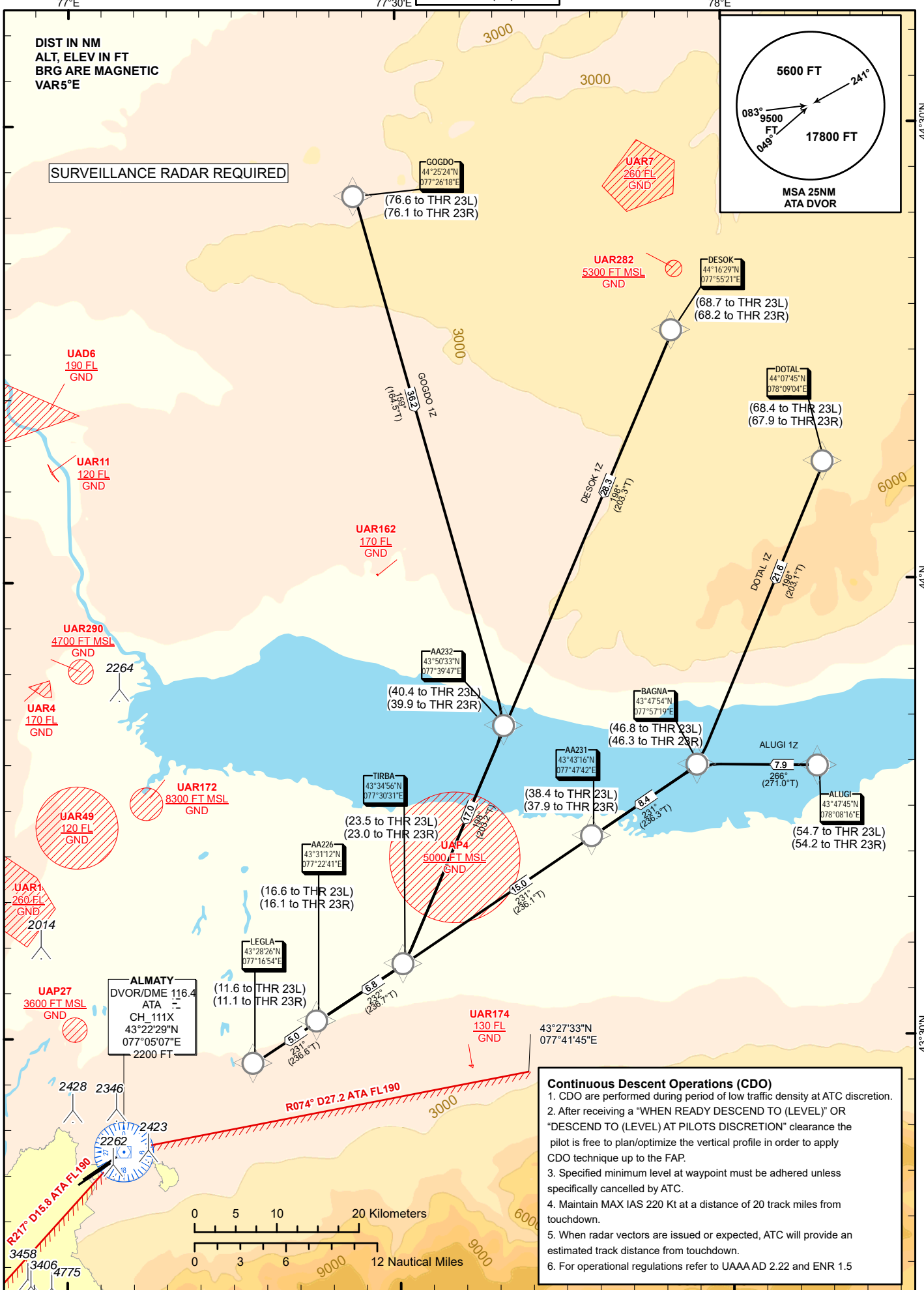
ALMATY  
RWY 23L/23R

DIST IN NM  
ALT, ELEV IN FT  
BRG ARE MAGNETIC  
VAR5°E

SURVEILLANCE RADAR REQUIRED



CHANGE: APP FREQ, editorial.



**Continuous Descent Operations (CDO)**

1. CDO are performed during period of low traffic density at ATC discretion.
2. After receiving a "WHEN READY DESCEND TO (LEVEL)" OR "DESCEND TO (LEVEL) AT PILOTS DISCRETION" clearance the pilot is free to plan/optimize the vertical profile in order to apply CDO technique up to the FAP.
3. Specified minimum level at waypoint must be adhered unless specifically cancelled by ATC.
4. Maintain MAX IAS 220 Kt at a distance of 20 track miles from touchdown.
5. When radar vectors are issued or expected, ATC will provide an estimated track distance from touchdown.
6. For operational regulations refer to UAAA AD 2.22 and ENR 1.5

TABULAR DESCRIPTION

ALUGI 1Z											
Serial Number	Path Descriptor	Waypoint Identifier	Fly - over	Course °M(°T)	Magnetic Variation(°)	Distance NM	Turn Direction	Altitude FT	Speed KT	VPA (°)	Navigation Specification
10	IF	ALUGI	-		5.12	0	-	+FL130/-FL210	315	-	RNAV1
20	TF	BAGNA	-	266(271)	5.12	7.9	-	+11000/-FL180	280	-	RNAV1
30	TF	AA231	-	231(236.3)	5.12	8.4	L	+9500/-FL150	280	-	RNAV1
40	TF	TIRBA	-	231(236.1)	5.12	15	R	+7300/-10000	250	-	RNAV1
50	TF	AA226	-	232(236.7)	5.12	6.8	R	+5800/-7700	230	-	RNAV1
60	TF	LEGLA	-	231(236.6)	5.12	5	R	+5000/-6000	230	-	RNAV1

WAYPOINT LIST

ALUGI 1Z		
Waypoint Identifier	Coordinates	
ALUGI	434745.00N	0780816.00E
BAGNA	434754.00N	0775719.00E
AA231	434316.07N	0774741.74E
TIRBA	433456.00N	0773031.00E
AA226	433111.67N	0772241.01E
LEGLA	432825.52N	0771654.27E

TABULAR DESCRIPTION

DESOK 1Z											
Serial Number	Path Descriptor	Waypoint Identifier	Fly - over	Course °M(°T)	Magnetic Variation(°)	Distance NM	Turn Direction	Altitude FT	Speed KT	VPA (°)	Navigation Specification
10	IF	DESOK	-		5.12	0	-	+FL160/-FL260	315	-	RNAV1
20	TF	AA232	-	198(203.3)	5.12	28.3	-	+9900/-FL160	280	-	RNAV1
30	TF	TIRBA	-	198(203.2)	5.12	17	R	+7300/-10000	250	-	RNAV1
40	TF	AA226	-	232(236.7)	5.12	6.8	R	+5800/-7700	230	-	RNAV1
50	TF	LEGLA	-	231(236.6)	5.12	5	R	+5000/-6000	230	-	RNAV1

WAYPOINT LIST

DESOK 1Z		
Waypoint Identifier	Coordinates	
DESOK	441629.00N	0775521.00E
AA232	435033.13N	0773946.65E
TIRBA	433456.00N	0773031.00E
AA226	433111.67N	0772241.01E
LEGLA	432825.52N	0771654.27E

TABULAR DESCRIPTION

DOTAL 1Z											
Serial Number	Path Descriptor	Waypoint Identifier	Fly - over	Course °M(°T)	Magnetic Variation(°)	Distance NM	Turn Direction	Altitude FT	Speed KT	VPA (°)	Navigation Specification
10	IF	DOTAL	-		5.12	0	-	+FL160/-FL260	315	-	RNAV1
20	TF	BAGNA	-	198(203.1)	5.12	21.6	-	+11000/-FL180	280	-	RNAV1
30	TF	AA231	-	231(236.3)	5.12	8.4	R	+9500/-FL150	280	-	RNAV1
40	TF	TIRBA	-	231(236.1)	5.12	15	R	+7300/-10000	250	-	RNAV1
50	TF	AA226	-	232(236.7)	5.12	6.8	R	+5800/-7700	230	-	RNAV1
60	TF	LEGLA	-	231(236.6)	5.12	5	R	+5000/-6000	230	-	RNAV1

WAYPOINT LIST

DOTAL 1Z		
Waypoint Identifier	Coordinates	
DOTAL	440745.00N	0780904.00E
BAGNA	434754.00N	0775719.00E
AA231	434316.07N	0774741.74E
TIRBA	433456.00N	0773031.00E
AA226	433111.67N	0772241.01E
LEGLA	432825.52N	0771654.27E

TABULAR DESCRIPTION

GOGDO 1Z											
Serial Number	Path Descriptor	Waypoint Identifier	Fly - over	Course °M(°T)	Magnetic Variation(°)	Distance NM	Turn Direction	Altitude FT	Speed KT	VPA (°)	Navigation Specification
10	IF	GOGDO	-		5.12	0	-	+FL180/-FL290	315	-	RNAV1
20	TF	AA232	-	159(164.5)	5.12	36.2	-	+9900/-FL160	280	-2	RNAV1
30	TF	TIRBA	-	198(203.2)	5.12	17	R	+7300/-10000	250	-2	RNAV1
40	TF	AA226	-	232(236.7)	5.12	6.8	R	+5800/-7700	230	-1.8	RNAV1
50	TF	LEGLA	-	231(236.6)	5.12	5	R	+5000/-6000	230	-2.1	RNAV1

WAYPOINT LIST

GOGDO 1Z		
Waypoint Identifier	Coordinates	
GOGDO	442524.00N	0772618.00E
AA232	435033.13N	0773946.65E
TIRBA	433456.00N	0773031.00E
AA226	433111.67N	0772241.01E
LEGLA	432825.52N	0771654.27E